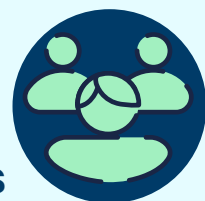


# FAMILY VETO IN ORGAN DONATION

## The Experiences of Organ and Tissue Donation Coordinators in Ontario

**Family Veto** occurs when a substitute decision maker (SDM) **overrides** a deceased donor's wish to donate their organs.

We spoke with **10** Organ and Tissue Donation Coordinators (**OTDC**) from Ontario, Canada.



The objective was to **learn about their experiences** with SDMs who vetoed a deceased donor's consent for organ donation.

### Findings



#### The significance of the OTDC role

OTDC reflected on their role as advocates for the deceased donor and educators to the SDM.

*"We're honouring the patient's decision... you're advocating first and foremost for the patient always."*



#### Emotional distress & the 'understandable' family veto

Family veto produced emotional distress, but trauma introduced the "understandable" family veto.

*"Family veto brings a sense of distress because you feel like you want to protect the patient."*



#### Barriers contributing to family veto

Barriers include timing and some healthcare providers' reluctance to support organ donation.

*"I think it's the timing... [SDMs] just want to get from where they are to the endpoint very, very quickly."*



#### Strategies towards a culture of organ donation

Strategies include value-positive language, increased education, and conversations about end-of-life wishes.

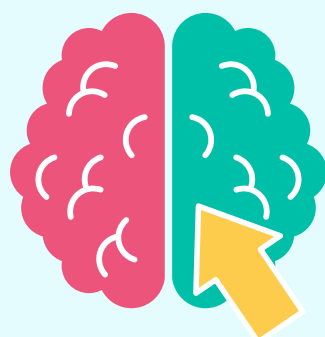
*"Have a conversation [with] your family doctor. Have a talk in schools... They need to know you [have] to be on a ventilator."*

### Findings suggest

Sharing **priorities** with organizations and professionals



Increasing **public education**



Discussing **end-of-life wishes** in everyday conversations



<https://lab.research.sickkids.ca/anthony/>  
Click the arrows to access our publication

