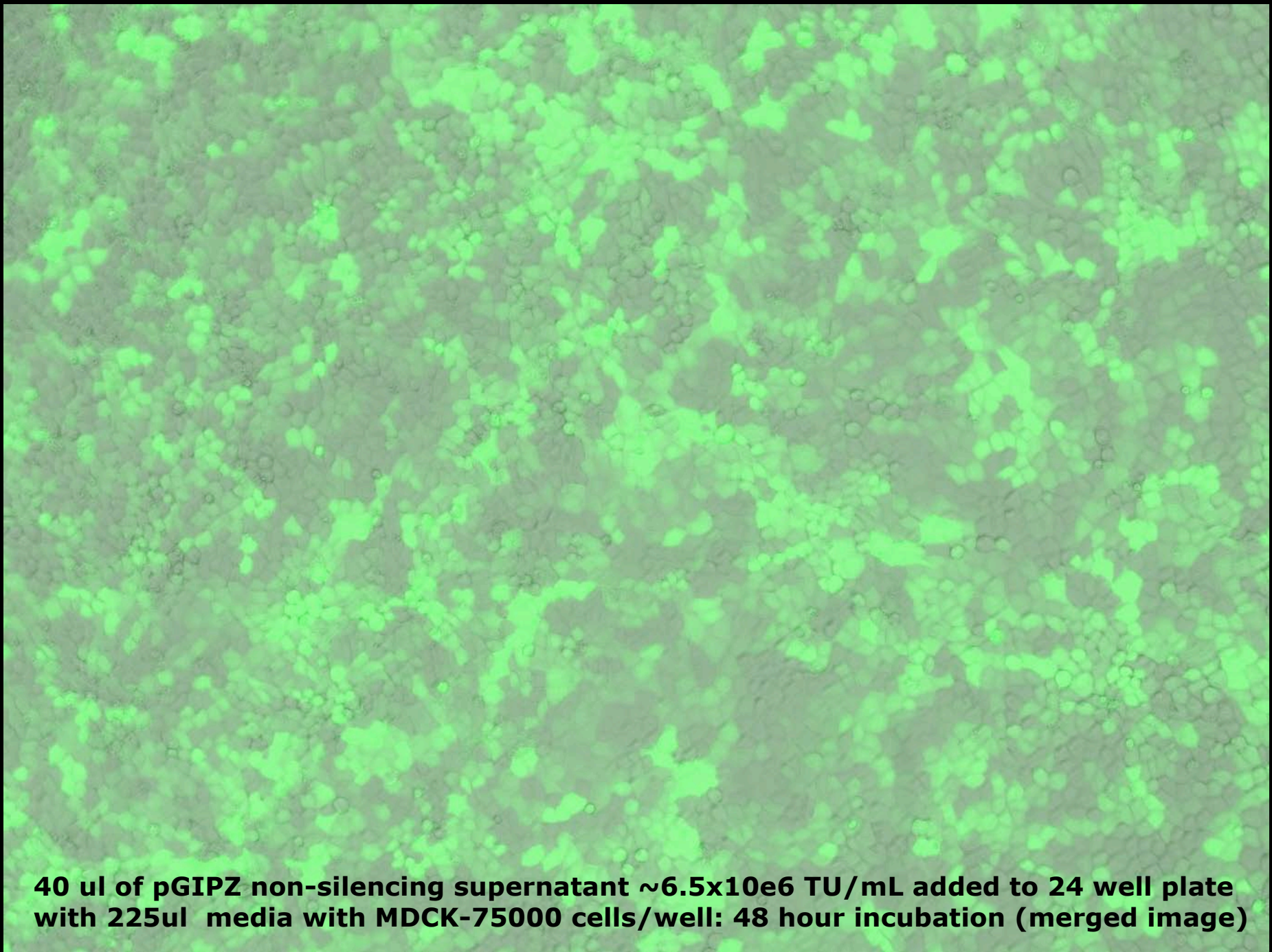


A fluorescence microscopy image showing a dense population of cells in a 24-well plate. The cells are uniformly stained with a bright green fluorescent protein (GFP), indicating successful transfection. The background is dark, and the green signal is distributed across the entire field of view.

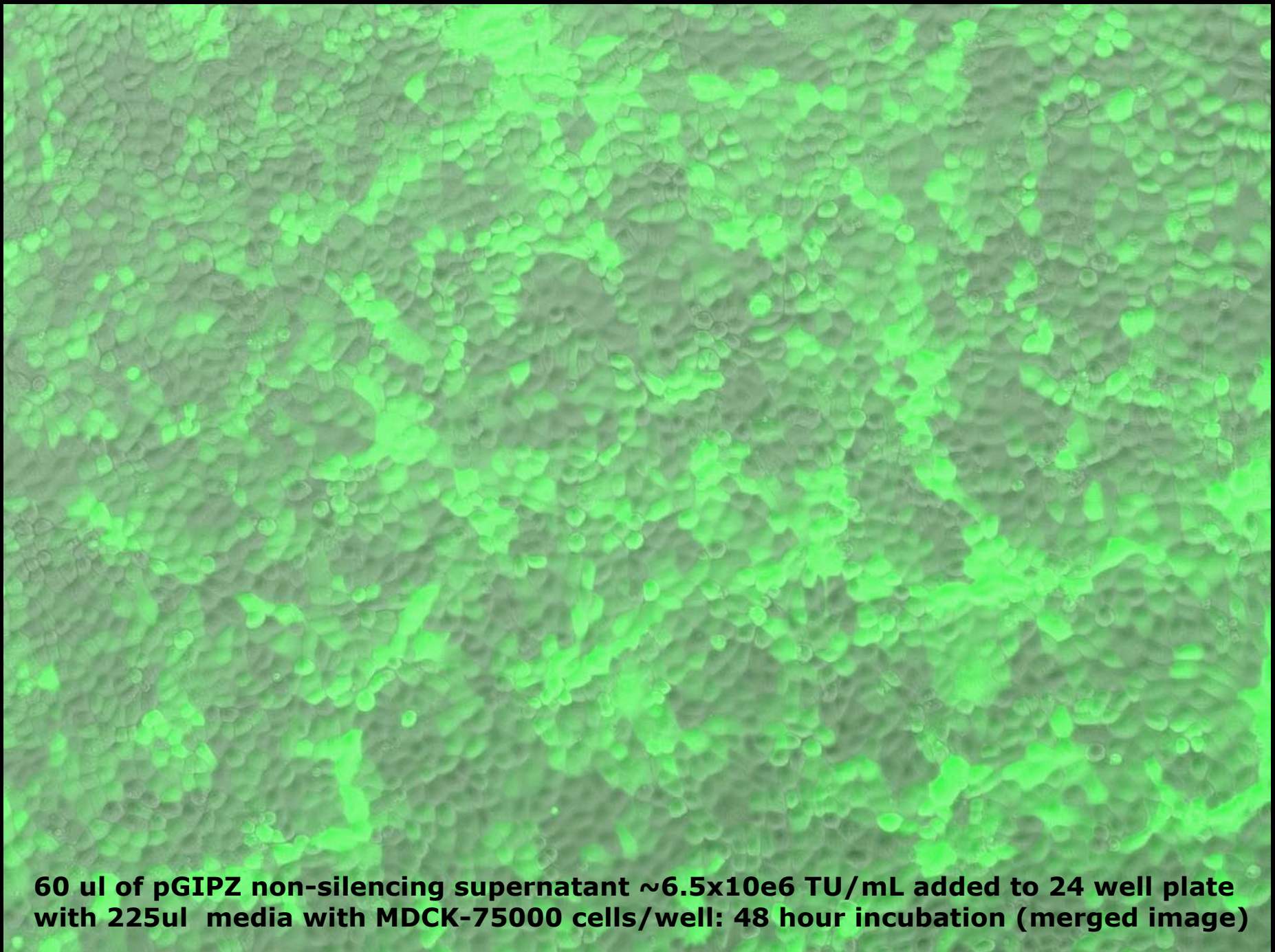
40 ul of pGIPZ non-silencing supernatant $\sim 6.5 \times 10^6$ TU/mL added to 24 well plate with 225ul media with MDCK-75000 cells/well: 48 hour incubation (GFP image)



40 ul of pGIPZ non-silencing supernatant $\sim 6.5 \times 10^6$ TU/mL added to 24 well plate with 225ul media with MDCK-75000 cells/well: 48 hour incubation (merged image)

A fluorescence microscopy image showing a dense population of cells in a 24-well plate. The cells are brightly stained with a green fluorescent protein (GFP), indicating successful transfection. The background is dark, and the green signal is distributed throughout the cell layer.

60 ul of pGIPZ non-silencing supernatant $\sim 6.5 \times 10^6$ TU/mL added to 24 well plate with 225ul media with MDCK-75000 cells/well: 48 hour incubation (GFP image)



60 ul of pGIPZ non-silencing supernatant $\sim 6.5 \times 10^6$ TU/mL added to 24 well plate with 225ul media with MDCK-75000 cells/well: 48 hour incubation (merged image)