

Introduction

The UNit (*UNchained Labs*) uses up to 3 multi-well cuvettes containing 16 microwells each, monitoring up to 48 samples/conditions in one experiment.



- Determines protein melting temperature (T_m) using tryptophan fluorescence or Sypro Orange and temperature of aggregation (T_{agg}) using static light scattering (SLS) at 266 nm and 472 nm.

Protein Applications of the UNit:

Technical Specifications	
Sample volume	9 μ L
Temperature range	15—95 °C
Heating rate	0.01—10 °C/minute
Protein conc. range	0.1—150 mg/mL
SLS laser wavelengths	266 nm, 472 nm
SLS sensitivity	12—22500 kDa · mg/mL
SLS resolution	~ 15 kDa mean
Fluorescence Detector	250—720 nm

- Temperature gradient and isothermal-based experiments
- Optimal buffer screening
- Compound stabilization / destabilization screening and dose response characterization
- Nucleic acid and peptide binding characterization
- Evaluation of protein refolding conditions
- Chemical fingerprinting



Structural & Biophysical Core Facility

Greg Wasney

Manager, Structural & Biophysical Core Facility

Peter Gilgan Centre for Research & Learning
The Hospital for Sick Children
686 Bay Street, Rm. 21.9708
Toronto, ON. M5G 0A4

Email: greg.wasney@sickkids.ca

Office: 416.813.7209
Office Internal Ext. 307209
Lab: 416-813-7654 ext. 309442

<http://lab.research.sickkids.ca/sbc-facility/>



The Hospital for Sick Children's Structural & Biophysical Core Facility



UNit — UNchained Labs

Static Light Scattering and
Fluorescence Thermodenaturation

Application Note #4:

Evaluation of protein refolding
conditions

- Evaluate and optimize protein refolding conditions
- Fold and recover inclusion bodies

UNit— Protein Thermodenaturation Assays

Evaluation of protein refolding

Protein refolding can be necessary when purifying recombinant proteins from a host system. During expression, the recombinant protein may aggregate into inclusion bodies, which contain mostly inactive and denatured protein. Protein refolding is one step in the purification of active and properly folded protein from inclusion bodies.

After isolation and solubilisation of the inclusion body, the unfolded protein sample can be introduced to a series of new buffer conditions in an attempt to refold it.

Some factors affecting refolding are:

- Buffer composition (pH, ionic strength)
- Other additives (e.g. detergents, chaotropic agents, sugars, L-arginine)
- Redox environment (addition of reducing and oxidizing agents, DTT, glutathione)
- Final protein concentration, incubation temperature and time

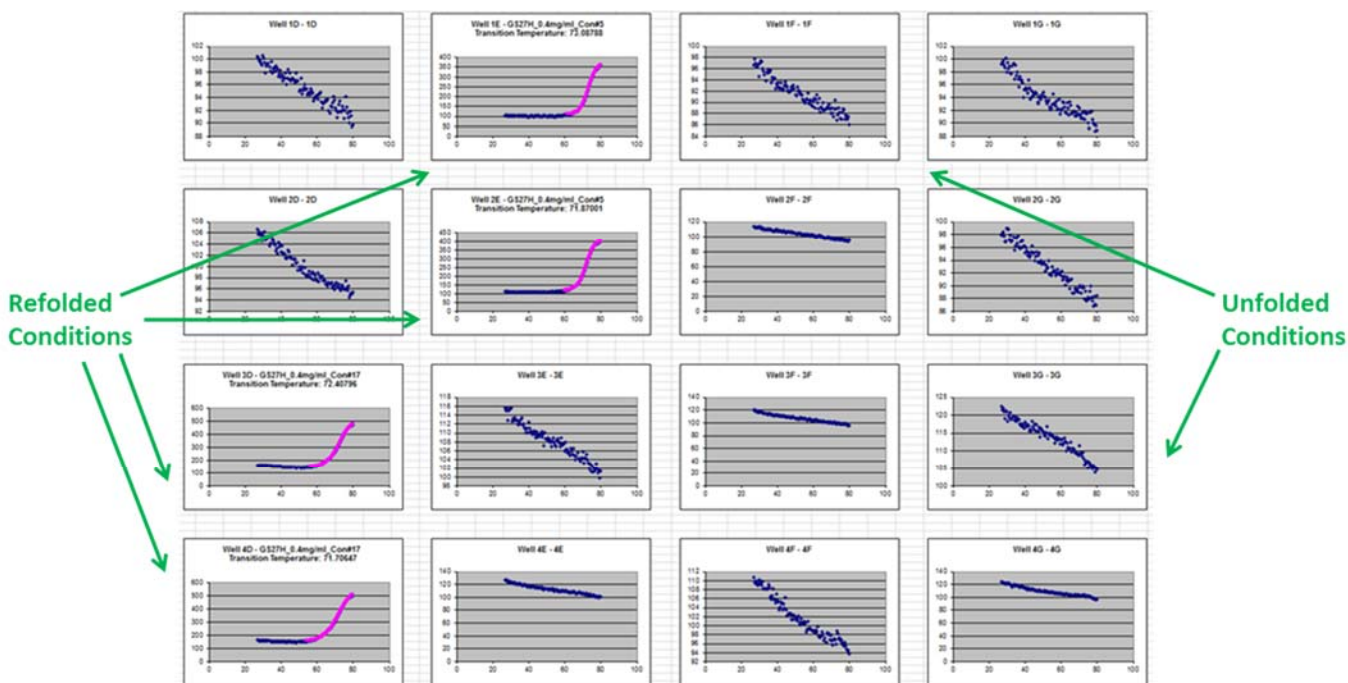
Using the UNit, many refolding conditions can be screened to verify if the protein has been refolded. Only folded protein can unfold and produce a denaturation curve.

The ideal conditions for refolding are unique for each protein and can be empirically determined using a protein refolding buffer screen.

Several commercial kits are available to screen for optimal protein refolding conditions.

General experimental set-up for protein refolding buffer evaluation

1. Dispense the refolding buffers into tubes or wells of a multi-well plate.
2. Add the unfolded protein sample to each tube or well and incubate. Incubation conditions can include temperature, time, final protein concentration and other factors. Small aliquots of unfolded protein can be added to the refolding buffer over time or the entire amount can be added at once.
3. Analyze protein for refolding by using the UNit thermodenaturation assay with 9 μ L sample volumes and a temperature ramp rate of 1 $^{\circ}$ C/min from 25 $^{\circ}$ C to 95 $^{\circ}$ C.
4. Buffer conditions that show a protein denaturation curve indicate that the buffer successfully acts as a refolding condition.



Only folded proteins can unfold!

If there is a denaturation curve, then the protein was refolded in that condition.